

❖
THE
LITTLE CORNARD

MAGAZINE



HARVEST
2013





SERVICES at ALL SAINTS

Service every Sunday at All Saints at 10:30am

except

1st Sunday of the month – 10:30am at St Mary's, Bures

Also...

Special services coming up:



Harvest Festival – September 15th, 10:30 am



Remembrance Sunday – November 10th, 10:30 am



Christingle Service – November 24th, 10:30 am

Please watch the notice boards around the village as there may be special services during the year to which all will be welcome.

✠ From All Saints Church Registers ✠

Funerals

Mick Matthews

Elizabeth Potter and Judy Corrigan

who also died but their funeral services were not held in All Saints.

ECO SYSTEMS

**The Environmentally Aware
Tree Care Professionals
Your Local
TREE SURGERY CONTRACTOR**

**Fully NCH & NPTC Qualified
in All Aspects of Tree Work
SITE & SCRUB CLEARANCE UNDERTAKEN
£5m Public Liability Insurance**

**Tree Surgery
Dismantling
Precision Felling
Planting
Hedge Maintenance**



ECO SYSTEMS TREE SERVICES
Woolcombers, Duke Street, Bildeston IP7 7EW

Sudbury **01787 229138**

Bildeston **01449 741255**

The Vicarage, Bures.

June, 2013.



Dear Friends,

Although this is the last contribution I will make to this magazine, it seems far too early to be saying goodbye – I won't be leaving until August, and my new job (Archdeacon of Stansted) doesn't start until September. But one question I've been asked a lot lately is, 'So what exactly does an Archdeacon do?' I wish I knew.

It seems a bit daft to have been given a job without really knowing every detail of what's involved – but it's a bit like that with being a Vicar. Over the years I've been called to do some fairly predictable tasks, but also some that I would never have imagined doing – and I think the best training has been learning as we go along.

Up to the first millennium, Archdeacons were Deacons who had not been ordained priests – and so, as the name suggests, an Archdeacon was the principal Deacon of the church. They were regarded as the Bishop's right hand man, and often chosen to succeed him on his retirement. Eventually the role of presbyter (or priest) became more common than Deacon and so Archdeacons were given oversight of both, and were themselves ordained as priests.

Today, each Diocese in the Church of England uses Archdeacons in slightly different ways. There are certain statutory duties around the care of church buildings, the appointment and support of clergy and being part of the Bishop's staff – but the bit that appeals to me is the use that Chelmsford Diocese wish to make of Archdeacons as 'leaders in mission and enablers of change.' The Christian faith is nowhere near as close to extinction as some would have you believe and the church has a huge role to play in society as we try to come to terms with the failure of money, science, logic, and other 'techniques', to bring us peace and a balanced life.

Whilst I have some idea of what will be involved, just like when we came here, I suspect that there will be much to learn and discover as we go along – which makes it both an exciting and daunting prospect at the same time. Many thanks to those of you who have wished us well and helped alleviate moments of panic with some encouraging words. Ask me in a couple of years what an Archdeacon does and I hope by then I'll have a better answer.

In the meantime, I'm still your vicar and enjoying it as much as ever!

Yours in Christ,

News from All Saints Church

CHURCHWARDENS' REPORT

It seems very strange to be writing a report for the Harvest Magazine at the beginning of June when the crops are yet to turn golden.

Since our last report we have had a Mothering Sunday service which included the Baptism of Lucia and Amaia Castano.

Our Easter services started with a service of prayer and contemplation on Good Friday. On Easter Day the service at 8 am was followed by breakfast for 42 in the schoolroom. The food as usual was delicious and the fellowship convivial.

We have had a very successful Flower Festival in May which raised £2,061 for Marie Curie Cancer Care. We thank all who helped or donated flowers, cakes, plants and took a turn on the rota in the Church.

The Harvest Fair this year is on the 14th September which coincides with the Suffolk Historic Churches Annual Cycle Ride. We hope, as usual, to have games, a bric-a-brac stall, a cake stall and bottle tombola, as well as the usual refreshments in the School Room. Any donations for these stalls will be gratefully received. For further information please contact Robert Mackman or Brenda Pentney (you can find their details on page 22). The Harvest Festival Service will be on Sunday 15th September at 10.30 a.m. (please note the earlier time) as this is the day that Robin King is being installed as Archdeacon of Stansted in Chelmsford Cathedral at 6.30 p.m. We send Robin, Katherine and family all the very best for their new life in Essex.

It is now common knowledge that Robin King is leaving. For the next 12 months or so the Revs. Mary Cantacuzene and Jo Goymour with help from Lay Readers and retired clergy will be taking the services. There will be the same number of services during this time but they may differ from those we have at present. We will put out notices on all the notice boards around the village as well as both notice boards at the Church listing all the services and special events.

At the soup lunches during Lent any money donated has always been given to charity. This year in response to the wonderful toilet facilities we have, including the stained glass window kindly made and donated by Heather Smith, it was decided to send a donation to "Toilet Twinning" to buy a block of toilets for a village in Chad, Africa.

The First Tuesday Group which meets in the school room on the first Tuesday of each month continues to flourish so please come and join us for refreshments and friendship. The Church, too, is always left open on this day for anyone who would like to sit somewhere for peace and quiet.

During the forthcoming vacancy please contact either of us with any queries or concerns.

CHURCH OPENING

The Schoolroom and Church are open every first Tuesday of the month,
between 10.00 am and 4.00 pm

Anyone will be welcome to join us for
refreshments, (including soup at lunchtime!) and general socialising or,
if you prefer, enjoy some peace and quiet reflection in our Church.

If you require any further information please contact

Brenda Pentney 01787 227615 or Virginia Mackman 01787 228077

CHURCH FLOWERS

As always the Church looked fantastic for our May Flower Festival so
a very big thank you to everyone who took part. It was marvellous to
be able to give such a large donation to Marie Curie.

Harvest Festival

Church decorating: Either Eileen, Marian or myself will let people know
nearer the date when the Church will be open for decorating. All offers of
help will be gratefully received. We will need to have all the arrangements
in place by the Friday evening, 13th September.

Please call: Sue Macdiarmid - 01787 375858

Eileen King - 01787 227447 or Marian Turner - 01787 377889

Sue Macdiarmid



SUFFOLK HISTORIC CHURCHES ANNUAL CYCLE RIDE

The total raised for the 2012 event was over £155,000.

It was a super warm, sunny day and we had 20 visitors at
Little Cornard.

Please contact John and Sue Macdiarmid for information about this year's
Sponsored Bicycle Ride. This will take place on Saturday 14th September.

Sue Macdiarmid - 01787 375858

Suffolk Historic Churches Web page: www.shct.org.uk/sponsored-bike-ride

Bates Wells & Braithwaite



Bates Wells & Braithwaite Solicitors

27 Friars Street Sudbury Suffolk CO10 2AD

T: 01787 880440 F: 01787 880488

W: bwblegal.com

E: solicitors@bwblegal.com

Expert legal help for business...

- **Commercial and company law**
- **Commercial property**
- **Employment**
- **Environmental law**
- **Farming and rural business affairs**
- **Health and safety**

for individuals...

- **Accident claims**
- **Employment**
- **Estates, trusts and wills**
- **Family and children**
- **Litigation/mediation**
- **Residential property**

ELIZABETH POTTER

Elizabeth and Frank Potter moved to Little Cornard in 1984. They soon became part of the life of the village and were involved particularly in Church matters.

In 1987 Frank and Elizabeth, together with three other P.C.C. members, were instrumental in setting up a scheme to provide pastoral support throughout Little Cornard when the village was without a Vicar during a period of interregnum. The village was divided into areas, each of which had someone allocated to them, this person would then be a contact for pastoral problems. The people living in each area were then informed of their contact.

Frank became a Lay Reader and took many services and meetings supporting the life of the Church here. On occasions he and Elizabeth would welcome people to their home for an informal social evening. After retirement from his career Frank trained for the Ministry and was appointed a Minister for some parishes near to Bury St Edmunds. Following his retirement from the Ministry, Frank and Elizabeth returned to their home in Upper Road and were again part of all aspects of social life in Little Cornard as well as the Church. They would often join in the annual Carol Singing evening and on one or two occasions their cat also joined the party for a few houses as they toured Upper Road.

It was sad that Frank suffered a severe stroke in 1999 and was in hospital for a considerable time. Eventually he, Elizabeth and their daughter and her family moved to a house in Cornard Road Sudbury where he was cared for by them.

Sadly Frank died in 2002 but Elizabeth kept up her involvement with friends and life in Little Cornard. As Elizabeth's health deteriorated she was looked after by her daughter Kate, then latterly she moved to Mellish House on Kings Hill, Great Cornard.

So it was sad to learn that Elizabeth passed away in November 2012 and is buried with Frank in Little Cornard Churchyard. The hymn Hills of the North Rejoice to the tune Little Cornard, was played at her funeral.

I personally remember the support Elizabeth gave me at a particular time in my life which I greatly appreciate.

We all offer Elizabeth's family our sympathy on their loss.

DORIS CUTMORE

BENEFICE WEEKEND AT LETTON HALL 2013

From Friday to Sunday May 3rd to 5th we, together with a group of around 60 people of all ages from Bures and Assington, experienced another fulfilling, inspiring and thought-provoking time together.

Talks and discussions, worship and singing led by an excellent group of musicians, times for quiet reflection, a country walk, go-karting - with our intrepid vicar voted the most daring driver - and an evening of fun with a variety of entertainment including the unforgettable 'synchronised swimming display', were enjoyed by us all.



The theme for the weekend was comparing the experiences of a parachutist jumping from an aeroplane and steering towards a safe landing with our need for courage to reach an unwavering understanding and belief through many difficulties and challenges.



Sadly this was the last time that Robin and Katharine will lead the team before they leave to start a new life in the Chelmsford Diocese. We would like to thank them most sincerely for their many years of organising these weekends and devising innovative ways to encourage and enhance our faith. We wish them every success in the future.

Barbara Rea & Clare Lodge.



COLLECTION POINT at All Saints Church

All Saints Church, Little Cornard is a collection point for supporting the Food Bank run by the Vineyard Church in Sudbury. Currently there is a great need for this support and they are very grateful for anything, they have given me a list of the most useful items which is as follows:

Tinned meals: Chilli, Sausage & Beans, Casserole, Curry, Macaroni Cheese, Ravioli, Mince & Onion, Spaghetti Bolognaise, Jar of Pasta Sauce, 500g Pasta, 250g Quick Cook Rice, Tinned Potatoes, Small Packet Cereal, UHT Milk, Tea or Coffee.

Treats: Cereal Bars, Sweets.

Optional Extras: Soup, Instant Noodles, Shower Gel, Toothpaste, Shaving Gel, Deodorant.

Some people have been very generously donating already and a box was collected today for which they were very grateful. If you have any questions about the scheme please contact me, Sue Macdiarmid on 01787 375858

www.stourvalleyvineyard.org/storehouse

Traffic through Little Cornard - Clive Johnson

Increased traffic through our village is something that concerns us all.

Yorley Barn Nursery School generates a steady flow of vehicles around their opening and closing times (9am and 4pm). They are very aware that this can be problematic for local residents. With this in mind, I now meet with Donna Row on a monthly basis to discuss traffic problems, which I can assure you, she takes most seriously.

Parents are regularly reminded to drive thoughtfully and with respect through the village. Her nursery welcome pack has a whole page on speeding and the dangers of driving along rural lanes. The very relevant nursery motto “20 is plenty” bears testament to this fact.

Donna has taken it upon herself to monitor traffic over different periods resulting in some interesting findings. She found much of the passing traffic is not visiting either the farm or the nursery, but just passing straight through the village, often at speed. I have personally witnessed local residents speeding past our farm by at what must be in excess of 40mph as they go to work.

Last month Donna had to deal with a very upset mother. She had been travelling home from the nursery when the driver of a blue car came up behind her. The driver flashed her lights, sounded her horn and waved aggressively. The parent checked her speed (20mph). Out of concern, she stopped to see if there was anything wrong with her car, only to be verbally abused by the woman who shouted and swore at her for going too slowly!! This incident was reported to the police, along with the vehicle number plate, only to find out the owner was a resident of Little Cornard!!

As a working farm we have also come under a lot of criticism regarding traffic from heavy vehicles. As many of the older residents in the village may remember, we ran a haulage business and our lorries drove through the village on a regular basis. Apart from general deliveries HGV vehicles are no longer as prominent in the village. Times change and diversification happens, especially in the farming world, where gleaning a living becomes ever-more challenging. I feel we should all exercise a little more patience and accept the positive outcomes that new businesses provide to our village. Life would be better for us all if we stopped always looking for the worst possible scenario.

People move from our cities and towns to the countryside and expect total peace, quiet and tranquillity. What they forget is that the countryside is in fact an industry – a farming industry, vital to the national economy. Once here they soon learn it can be noisy, disruptive, smelly and intrusive!!

Clive Johnson, Yorley Farm, Lt Cornard.

The nursery will close for the summer holidays from August 17th - 1st September.

Queen Awards Graham Deere

It was good to see the report in the East Anglian Daily Times in June that, earlier in the year, Graham Deere from our village, had been awarded the Certificate of Meritorious Service from Her Majesty the Queen. As there are only two of these certificates given each year, it made the fact that Graham received this award very special indeed.

The award was in recognition of the 20 years of time and effort he has given to the The Air Cadet Training Corps. As a Wing Staff Officer, Graham now oversees nine squadrons in the Norfolk and Suffolk Wings giving much support and expertise to the Corps. The Air Cadet Training Corps offers youngsters between the ages of 13 and 20 an opportunity to experience activities such as gliding and flying. The Corps can also help them work towards a Duke of Edinburgh Award, and perhaps more importantly for their futures, gain valuable qualifications towards an NVQ in aviation studies.

Our congratulations go to Graham.

LITTLE CORNARD CONSERVATION SOCIETY

In May, members visited The Abbey at Coggeshall. It is an extraordinary medieval building on the banks of the River Blackwater in rural Essex. Parts of the original building date back to 1160. The Abbey was founded in 1140 by King Stephen and his wife Matilda. One of the great features of The Abbey is its early and very fine medieval brickwork.

Our June visit was to the garden of Kathy and Richard Matthews on Prospect Hill. Kathy has developed a wildflower meadow from scratch, and although the flowers are way behind schedule due to the cold Spring, there was still lots to see.

We have two remaining summer outings before our Winter Programme commences on 26th September with a talk on the history of Sudbury Cricket Club. Also scheduled for the Autumn are speakers on East Prussia and Antique Jewellery.

All enquiries for membership or guest visits are most welcome to myself on 01787 227614.

Patricia Monk

From James Finch - Your Stour Valley County Councillor
The New Suffolk County Council Administration

The new administration now has “its feet under the table” and met for the first time on 23rd May at the council meeting. This meeting welcomed the new Cabinet and Councillors. I have accepted the offer from Mark Bee, the Leader of the Council, to be Chairman of the County Council Scrutiny Committee. This Committee is responsible for the whole scrutiny function. I look forward to “adding value” to the Cabinet decisions with my committee in the tough times ahead. I have also been asked to work in developing the County Farms strategy alongside Colin Noble the Cabinet member responsible for our property portfolio and will continue my work with the Dedham Vale AONB (Vice Chairman) and the National Grid Transmission project (more later) .

At the first full Council Meeting, Mark Bee confirmed that with a majority Conservative administration we have a mandate to continue on the path we have set. The priorities as laid out in our manifesto are:-

To Raise the Bar in Education.

To complete our School Organisation Review.

To push our Growth Strategy, for the local economy & jobs in Suffolk.

To invest in apprenticeships.

To launch our new travel card for young people.

To roll-out high-speed broadband across every part of Suffolk.

To complete and open our energy-from-waste facility.

To continue our Greenest County project.

To support vulnerable people and plan ahead by working with Care UK as they build 10 new state-of-the-art care homes, and with our partners across Suffolk to develop vital extra-care facilities.

**To work with the Police to keep Suffolk safe,
and, crucially, to freeze council tax for each of the next four years.**

Local News !!!

My Councillor Clinics – I have had a positive response to this suggestion. I plan to start these clinics in those villages whose parish council only meet every other month. I am therefore planning these in Boxford (for residents in those villages north of Boxford in my division) and in Assington for residents from Newton, Little Cornard, Bures and Assington. Venues and times will be published via the Parish Councils. Please note that these do not replace any contact you may wish by telephone or email or my contact with the Parish Council.

For those who are about to start their summer holidays – enjoy your break and bring out the sun for the rest of us !!

James Finch - Suffolk County Councillor - Stour Valley Division

Assington, Boxford, Bures St Mary, Edwardstone, Groton, Leavenheath, Lindsey, Little Cornard, Milden, Nayland with Wissington, Newton, and Stoke by Nayland

Tel 01206 263649 Mobile 07545 423796

Time for Transformation

I was honoured to be elected as District Councillor for Bures St Mary ward, which includes the parish of Little Cornard, on May 2nd. This followed the retirement of my predecessor Peter Holbrook who gave 14 years sterling service to the community. May 2nd was a beautiful day – so it was a shame that turnout was low, though I believe Little Cornard had the highest turnout of the three parishes in the ward. I have many first impressions, not least a whole new lexicon of acronyms to get used to, and there is no doubt which is the top buzzword – ‘Transformation’.

‘Transformation’ is the programme which Babergh are embarking on together with Mid-Suffolk council to merge administrative services (though they will remain entirely separate, sovereign councils). At a time when there is such pressure on the purse strings of ratepayers, there is an even greater duty on all elements of government to be run as cost effectively as possible and a key aim of the transformation program is to reduce running costs so that we can keep a lid on council tax. We councillors are being appointed to various ‘transformation enquiry committees’ to oversee the program – and I have been appointed to Housing. I look forward to updating readers on the progress of this ambitious but critically important program at forthcoming parish council meetings.

James Cartlidge

Sudbury Symphony Orchestra CONCERTS



Advance Notice

SATURDAY 23rd NOVEMBER 2013

at 7.30 pm, at St Peter's Church, Sudbury

Humperdinck: Hansel and Gretel Overture

Rimsky-Korsakov: Scheherezade

Conductor: Matthew Andrews **Leader:** Christina Everson

Tickets are available from our website:

www.sudburysymphonyorchestra.com

and Compact Music, North Street, Sudbury.

To be added to our e-mailing list please contact:

mailings@sudburysymphonyorchestra.com

Hannah Fraser

By SARAH GRIFFIN

It was love at first sight. I just knew, the way they always say you do when you find 'The One.' No, not Ciaran, I mean Little Cornard, or more specifically, Burnt House.

It was 2006 when we moved in so I suppose I should be having some kind of seven year itch. Except I'm not, not at all, actually I feel as though I am taking root in Suffolk's arable soil.

Here are some of the Sudbury things which make me happy: I know the hens who lay my eggs; there are still such things as honesty boxes for roadside stalls; the rush hour lasts from 5pm to 5.09pm; you can still see the moon; we have real weather and if someone honks at you on a pedestrian crossing it's more likely to be a neighbour saying they've taken in a parcel than a driver with road rage.

Compare if you will these niceties to my previous home in west London where half an hour after I'd hung a Christmas wreath on my front door one of my neighbours nicked it. It was probably the same neighbour who relieved me of my handbag when I had a broken foot and couldn't give chase. Or maybe it was one of the customers from the crack den which opened next door to my beautiful boutique apartment who, when they were too skint to buy cocaine would routinely break into my car and sit in it to keep warm.

You may be thinking this is dramatic licence – it's not. The crack house was closed after armed police officers shot the drugs baron who ran it right on my doorstep. It stained terribly. Such is city living.

In Suffolk there have not yet been any crimes against my person. Well, not unless you count the fact that I've been mugged by middle age what with my wider waistbands, my reading glasses and my predilection for comfortable shoes which owe more to 'Nana' than Notting Hill. The worst thing that happens to me here is the occasional pigeon falling down my office chimney and flapping about casting sooty feathers across my desk and scaring the bejesus out of both of us.

This shift to a quieter, more rural way of life is becoming a significant social trend. A staggering 620,000 Londoners have quit the capital in the last decade according to the most recent census. That's enough people to populate a city the size of Glasgow.

And where are they all going? Well, seven of the ten districts which enjoyed the greatest net population gain are in East Anglia. They stretch from Lincolnshire and Cambridgeshire up to Norfolk and down to Essex with two of the ten being in Suffolk itself.

Having tired of the daily fight against crime, pollution, overcrowding, inflated house prices and special measures schools in the metropolis we gave up, moved out and looked east in search of a better life for ourselves and our children.

In the concrete of my boot room floor is carved the legend Max. Ben. Frith. 1975. In my mind's eye I see them as little Suffolk boys, strong and tanned and adventurous and free, living the life my sons do today. Yet they will be men now, possibly with families of their own.

Their perfectly preserved autographs remind me that what is now my home has belonged to many others down the centuries. There will have been births and deaths under this roof, contented years and quarrelsome ones.

I don't know much of my house's history other than the obvious: that someone who loved roses has left a perfumed legacy in my garden and its bread ovens suggest I am but the latest in a long line of bakers of a daily loaf.

But I do know it's my turn and that the emotional investment I have made in digging up my London life and transplanting it to Suffolk is so great my friends in the capital tease me that my next step will be to make a Unilateral Declaration of Independence for the Stour Valley.

OK, so I can't go that far – yet – but having taken refuge in Constable Country I'm not going anywhere until circumstances conspire to make me. There is no seven year itch, just a familiarity and a sense of gratitude for a life far easier and kinder than the one we might have had. I imagine the other 619,999 people who also did a runner from London feel much the same.

It was Samuel Johnson who famously said: 'When a man is tired of London, he is tired of life; for there is in London all that life can afford.'

Except you can't put a price on happiness can you?

DEDHAM VALE HOPPER BUS

This service was resumed for 2013 on 3rd July and will run on Tuesdays, Wednesdays, Saturdays and Sundays until 29th September.

This service visits the Dedham Vale area. More information on the route this takes, can be obtained by either telephoning: 01473 264263 or 01473 82642; or visiting the website: www.dedhamvalestourvalley.org.

Sudbury Physiotherapy Centre **01787 378 178**

MUSCULOSKELETAL & NEURO-PHYSIOTHERAPY

For all injuries, aches & pains from head to toe including paediatric.
Neurological conditions – Strokes, Parkinson's, MS, fall related injuries.

PODIATRY & GAIT ANALYSIS

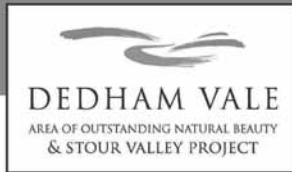
SPORTS MASSAGE & REFLEXOLOGY

PILATES, CLINICAL HYPNOSIS, HOMEOPATHY & COUNSELLING

OPEN: Mon-Fri daytime plus Mon & Thurs eve & Sat am
Discounts for the over 65's

For more information or an appointment:
www.sudburyphysio.co.uk

8 Cornard Road, Sudbury
Suffolk CO10 2XA



Walks Programme 2013 The Work of the Project Explored

THE 'RIVER' - THE HEART OF THE STOUR VALLEY

Sunday 22nd September, 10.00am - 3.00pm. Approx. 8 miles. Moderate+
Discover more about rivers, their management and what initiatives the Project team is involved with as you meander along the River Stour from Bures to Sudbury. Follow the Stour Valley Path to Sudbury and return on the 2.42pm train to Bures.

HIDDEN TREASURES with MANAGING A MASTERPIECE

Sunday 24th November, 10.00am - 1.30pm. Approx. 5½ miles. Moderate
As you walk from Bures Common to Wormingford's lost Tudor Hunting Lodge discover how the Managing a Masterpiece team have worked with local communities to reveal the archaeological treasures under your feet.

Easy: gentle stroll with locations that are very accessible by everyone
Moderate: suitable for most, but may include some rough ground and stiles
Moderate +: experienced walkers who are used to longer distances

Please note: all finish times are approximate; appropriate footwear and clothing should be worn; well behaved dogs on leads are welcome; walks may be cancelled or the route changed at the discretion of the walk leader.

ADULT £5.00 - CHILDREN FREE

Numbers limited. Bookings taken one calendar month before each event.

For further details, please contact us on:

T: 01473 264263 E: dedhamvale.project@suffolk.gov.uk W: www.dedhamvalestourvalley.org

A joint project funded by: Essex and Suffolk County Councils, Babergh, Braintree and Tendring District Councils, Colchester and St. Edmundsbury Borough Councils and Deffra.



Cornard Mere - Robin Ford Voluntary Warden

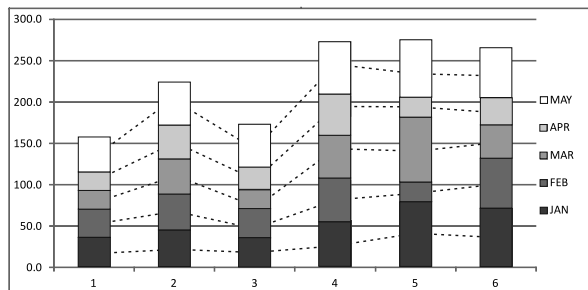
The Wild Strawberry is not a plant that one associates with wetlands. However, a small colony of this species, probably originating from the site of the former Little Cornard Brickworks, can now be seen flowering at the foot of the flight of steps that leads onto "The Woodland Walk". Over time, this section of the public footpath, that lies along the southern boundary of the Mere, had become overgrown with Blackthorn and Elder scrub. The general public was forced to trespass along the edge of a field at the top of the bank and through a private garden, before regaining the right of way near the mature Oak tree. Around fifteen years ago, members of the volunteer work party discussed the possibility of reinstating the path to the bottom of the bank. Over one winter of monthly work parties, the volunteers tunnelled their way through the undergrowth and created the winding track that now has become a feature of the Mere. Since that time, two view points, which



overlook the reed bed and the main pond, have been added, allowing visitors the chance to enjoy the birdlife when water levels are high. It is always a pleasure to stop for a few moments and listen to the chattering of Reed and Sedge Warblers or watch the diving skills of Tufted Ducks and Dabchicks. On one memorable occasion a family of Water Rails emerged from the shelter of the reeds and began searching for food at the water's edge.

Monthly Rainfall Figures in millimetres - 1st 6 months of 2013

Thanks to Rosemarie & Frank Balls for the local figures



Jan - May
RAINFALL
(mm)

1	LITTLE CORNARD
2	WATTISHAM (AVERAGE)
3	CAMBRIDGE
4	OXFORD
5	ROSS ON WYE
6	ABERPORTH

Monthly Rainfall Figures in mm, 1st 6 months (Thanks to Rosemarie & Frank Balls for the local figures)

	Little Cornard		Wattisham		Cambridge		Oxford		Ross on Wye		Aberporth	
		Cumulative	(Av)	Cumulative		Cumulative		Cumulative		Cumulative		Cumulative
Jan	36.5		45.7		37.0		58.5		79.6		71.6	
Feb	33.5	70.0	43.6	89.3	19.6	56.6	47.4	105.9	23.6	103.2	60.4	132.0
Mar	22.5	92.5	41.3	130.6	38.6	95.2	76.6	182.5	78.7	181.9	40.0	172.0
April	23.0	115.5	41.9	172.5	26.4	121.6	24.8	207.3	23.9	205.8	33.4	205.4
May	42.0	157.5	51.8	224.3	52.0	173.6	66.2	273.5	70.2	276.0	60.8	266.2
June	17.5	175.0	52.7	277.0	NO DATA							



Registered Charity No. 1022588

CWBC

A voluntary organisation offering help and support to those who are going through or have been through the trauma of breast cancer or any breast disorder

We offer support throughout
EAST ANGLIA

To contact a supporter in your area, please telephone our Support Line at local rate on

0845 601 7152

24 Hours a Day, 365 Days a Year

Coping with Breast Cancer
Westerfield Business Centre
Main Road, Westerfield
Ipswich IP6 9AB

www.copingwithbreastcancer.org
Registered Charity No. 1022588

APPLE & CINNAMON TRAY BAKE

4 oz margarine
4 oz caster sugar
1 large egg
8 oz SR flour
Half-teaspoon cinnamon
Pinch of salt
1 cooking apple (half lb)
4 tablespoons of milk
Swiss roll tin - 10 x 8"



Brush tin with a little melted fat. Cream margarine then beat in the caster sugar until light and fluffy. Beat the egg and add to the creamed mixture, beating in well. Sieve flour, cinnamon and salt together. Peel, core and roughly chop the apple. Stir the flour and apple into the other ingredients, with the milk. Turn the mixture into the tin and, using a palette knife, spread it evenly to the sides. Cook in centre of a moderate oven, gas mark 4, or 180c, for 25 - 30 mins, until cake is golden brown and springy to the touch. Immediately the cake is removed from the oven, sprinkle with some extra caster sugar and leave in the tin to cool. Cut into 18 pieces.

This is another recipe from the `ABC of Cooking` book.

Copies of the book are available from the schoolroom at Little Cornard Church.

Pylon Update 3 - 2013

What happens next:

Technical and environmental surveys will be used to develop the proposed new line

Discussion with landowners to help understand concerns and access issues

Feedback from consultation will be considered before Planning Application is submitted in 2014

Community Forums meet again to consider any additional information

If the application is granted, construction could start in 2015.

Nick Hammond



LICENSED TO SWEEP

Woodburners

Open fires

Cookers

Boilers

Conventional Brush & Vac or Power Sweeping

CCTV Surveys & Inspections

All Types of Flue Systems Installed

Call the Professionals - you can prevent fire...

REMEMBER – YOU ONLY LIVE ONCE!

**CERTIFICATES ISSUED
FULLY INSURED**

01787 474727

www.rceng.co.uk



Improved Broadband for Little Cornard ?

Broadband upgrades have for financial reasons been mainly restricted to conurbations. The Broadband for Suffolk Programme (<http://www.betterbroadbandsuffolk.com>), run by Suffolk County Council, has secured around £24m of public money to get high speed broadband out into the countryside. The programme should be completed County wide by 2015 and have 90% of Suffolk premises served by fibre optic based broadband (not copper or aluminium lines), The remaining 10% will have speeds from 24 Mbps down to as low as 2 Mbps which though not very fast is still considered to be 'usable' as the connection should be more reliable. The Work **should** commence in this area early next year (see the 'Post Code Checker' on the web-link above).

Beware - it seems the map is not updated regularly. Dark blue areas only mean that they are seriously thinking about it and black it is done! Once up and running the service must then of course be offered to all 'Service Providers' for distribution.

At the moment our Broadband comes all the way from Bures giving many our village only a cranky 1.5 Mbps maximum connection. I am afraid that from here on in, it is all still a little cloudy. The good thing about Little Cornard is that 'fibre' has actually been here for quite some time but just not used. It seems that the cheapest option will be 'Glassing in' to a 'Head End' like the one installed on Workhouse Green 18 months ago. 'Fibre Direct' can then be supplied via the existing telegraph poles straight to your house which hopefully will give up to a phenomenal 80 Mbps. Some Green Boxes may need to be installed which will give the slower but much improved service via wire. I still suspect we should all keep our fingers crossed from now on!

John Quick



SUMMER SECURITY REMINDER



Be extra vigilant in daylight hours.

This is because people tend to feel 'safer' when not surrounded by darkness. However statistics show burglaries are just as likely to occur during the day.

A burglary at a property can occur any time day or night, in fact many happen during the day as offenders tend to blend in better with the surroundings and are able to offer more plausible excuses should they be challenged, such as 'I am lost', 'I am looking for Mr X who lives somewhere here'. 'I thought this property was for sale' and 'I have lost my dog', along with other excuses that can be more easily made during the normal daylight working hours.

If your home is unoccupied during the day, here are a few tips to help you to improve security:

1. Always lock doors & windows when you leave the house, even if for only a few minutes.
2. Remove tools/objects from within your garden that could be used by an offender to break in.
3. Use lights and, especially during the day, radios on timers;
4. Never assume that your garage will be safe while unlocked even if you are currently at home.
5. Insert a ground anchor positioned by the front of the garage to prevent it from being opened.

PLEASE CALL THE POLICE IMMEDIATELY USING 999 IF YOU SEE OR HEAR ANYTHING SUSPICIOUS

Further crime reduction advice is available from your local Safer Neighbourhood Team on:
101. PHIL GOOCH - NEIGHBOURHOOD WATCH CO-ORDINATOR - 01787 372013

Phil Gooch - Co-ordinator
01787 372013

**Little Cornard
Neighbourhood
Watch**



WORKHOUSE

Graphic Design

Graphic Design
Artwork and Layouts
Print and Print Consultancy,
Website Design & Production
Advertisements, Leaflets,
Stationery, Business Cards ETC.

 **01787 228220/468910**
www.workhousegraphics.co.uk

Steve Norman

Furniture Restorer
and Polisher

Telephone: 01787 319614

Mobile: 07790 458638

Cheryl Bird Florist

Wedding flowers, floral tributes for funerals,
party or special occasion flowers or
just bouquets from fresh or silk flowers.

Tel: 01787 227259

www.cherylbirdflorist.co.uk

Canhams, Upper Road, Lt. Cornard, Sudbury.

LITTLE CORNARD PARISH COUNCIL

Little Cornard Parish Council meets
at the Village Hall five times a year.

All meetings start at 7pm
and members of the public or press
may attend.

Remaining Meeting dates for 2013

Monday 9th September

Monday 11th November

The minutes from Parish Council
meetings are available on:
www.lcpc.workhousegreen.me.uk

Dedicated Website for Parish Council Minutes, Information, Links and Email Contact Address

In response to requests from members
of the public attending meetings we will
be making available a larger range of
information as submitted to the
Parish Council

It can be found, as usual at:

<http://www.lcpc.workhousegreen.me.uk>

There is now a dedicated email address
for contacting the Parish Council:

Email: info@lcpc.workhousegreen.me.uk

GREAT CORNARD LIBRARY

at Thomas Gainsborough School - *Head Lane.*

Now Open Every Sunday until 3pm, *all year long!*

School Term Opening Hours:

Monday, Tuesday, Wednesday & Friday	8.30 am - 1.00 pm 1.30 pm - 5.00 pm
Thursday	8.30 am - 1.00 pm 1.30 pm - 7.00 pm
Saturday	10.00 am - 3.00 pm
Sunday	10.00 am - 3.00 pm

School Holidays:

Tue & Fri	10.00 am - 1.00 pm 1.30 pm - 5.00 pm
Thursday	2.00 pm - 7.00 pm
Saturday	10.00 am - 3.00 pm
Sunday	10.00 am - 3.00 pm

Tel. 01787 315195

**The Mobile Library now visits Little
Cornard Monthly on Saturdays.**



**Please check with the
driver for dates.**

**Sudbury Rd:
3.40 - 3.50 pm
Workhouse Green:
3.55 - 4.15 pm**

Do continue to use this well-stocked
library and the assistance of the
knowledgeable and helpful librarian - it
is the easiest way to get hold of the latest
publications at **NO EXPENSE.**

<http://www.suffolklibraries.co.uk>

MAGAZINE CONTRIBUTIONS

If you have any matter of interest or news item you would like included in the next issue of the Little Cornard Magazine, please contact:-

Doris Cutmore

Allestons, Chapel Lane
Little Cornard.

Tel: 01787 375116

Patricia Monk

Kingsbury Cottage, Upper Road,
Little Cornard.

Tel: 01787 227614

**All articles etc. for the Christmas Issue
to be received for inclusion by the third week of October 2013**

This is the Little Cornard Magazine which reports on all areas of interest in the parish. The Parish Council and the Village Hall Committee assist the Church with the financing of this magazine.

INFORMATION - INFORMATION - INFORMATION - INFORMATION

Church:

Vicar - To be appointed.

Treasurer - Patricia Monk, Kingsbury Cottage, Upper Road, Little Cornard - 01787 227614

Secretary - Clare Lodge, 10 St. Peters Court, Sudbury - 01787 312494.

Churchwardens - Robert Mackman, Cobnut Cot. , Upper Road, Lt. Cornard - 01787 228077
Brenda Pentney, 52 Colchester Road, Bures, Suffolk CO8 5AE - 01787 227615.

Members of the Parish Council:

Chairman: Clive Johnson, 'Oak Lodge', Upper Road, Little Cornard.

Vice Chairman: Peter Cutmore, 'Allestons', Chapel Lane, Little Cornard.

Clerk to the Parish Council: John Quick, Upland Cottage, Upper Road, Little Cornard, Sudbury, Suffolk CO10 0NZ - Email: info@lpcp.workhousegreen.me.uk

Members: Ruth Adams, Cheryl Crane; Phil Gooch; Nick Hammond and Noel King.

Parish Council Information Web Posting www.lpcp.workhousegreen.me.uk

Village Hall:

The cost of hiring the Village Hall for a morning, afternoon or evening session is: £12 for those living in the village and £15 for all others.

Tables, chairs, cutlery etc are available for rent. For information please contact: Noel King, Booking Secretary on 01787 227447.

E. JOHNSON

Farmers and Growers

Suppliers of

HAY, HAYLAGE, SHAVINGS, WHEAT & BARLEY STRAW

Delivery Service

* * *

JOHNSON'S QUALITY EX- MUSHROOM COMPOST

Available in bulk only

Fresh for Christmas or frozen throughout the year

Free Range & Additive Free

Kelly Bronze or White Turkeys

Cobb Chickens * Geese * Ducks * Game

Burgers * B.B.Q. Meat Etc.

www.turkey-suffolk.co.uk



Yorley Farm, Little Cornard, Sudbury C010 0NZ

Telephone: (01787) 227353

M HEARNDEN

CARPENTER & JOINER

All types of woodwork undertaken

01787 248285



Wayne Hickford

Garden Contractor

19 St. Bartholomews Lane, Sudbury

Tel: 01787 880044

Safari Consultants Limited

Is pleased to sponsor this Magazine

BORDER ROOFING

TONY BUCK - BOB BUCK

Tel/Fax 01787 374920

Mobile: 0797 0668002

The Brook Inn



01787 373166

Great Real Ales
Large Beer Garden
Home Cooked Food
All parties catered for
Family friendly environment
241 Bures Road, Great Cornard CO10 0JQ

ADVERTISE HERE

Brian Hearnden

General Builder,
Painter and Decorator

01787 227964

07771 922817

hearnden14@btinternet.com

Barrett-Lee

Main Dealer Service at Independent Prices

- Dealer Level Servicing
- Full Repair Facilities
- Warranties are Safe
- Full Diagnostics
- Power Upgrades
- Air Conditioning
- Class IV MOT Tests
- Tyres Supplied & Fitted
- **FREE** Courtesy Cars



SEE WEBSITE FOR DETAILS & OFFERS

www.barrett-lee.co.uk
01787 370774

Unit 4, Byford Road, Sudbury CO10 2YG



Furniture Workshop

Tel: 01787 312115

Experts in all types of Antique
Restoration and Upholstery
Contract Work also Undertaken

P.J. Munday, The Old Brickworks, Chapel Lane,
Little Cornard, Sudbury, Suffolk CO10 0PB